



### Project “Promotion of Sustainable Development by Strengthening the Social Clustering in Public Sector” Partner Visit to Oslo, Norway



In November 14<sup>th</sup> – 17<sup>th</sup>, 2016 the project partner representatives took part in the first visit to Norwegian partner institution *Flexible Education Norway*. The main purpose of the visit was to identify the social cluster competency model development stages. Intensive meetings with project partners, debates, discussions and group work facilitated the setting of the social cluster competency model development stages, which will be used as a basis for the creation of the model and arrangement of virtual training and training events.

During the visit, the representatives of the project partner institutions had the opportunity not only to share best practice on the competency development methods, but also get acquainted with the project partner - Norwegian umbrella organization Flexible Education experience in the development of social cluster in public sector.

Upcoming cooperation opportunities were discussed during the visits of Norwegian and Lithuanian partners, training programmes targeted results. During the upcoming visit in Norway of project participants from Lithuania more practical activities and meetings planned in the municipalities on sharing the best experiences and



visit,  
and  
are

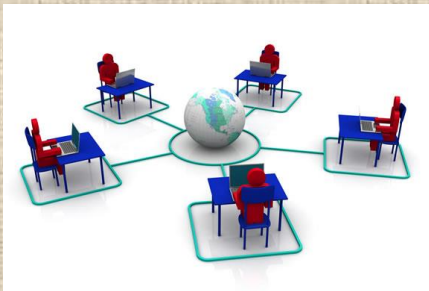
practises: how to create networks with different organizations; familiarization with the examples of successful practises, relevant to cooperation and development of social clustering.

Taking part in the visit is a part of Lithuanian University of Educational Sciences-administrated project “*Promotion of Sustainable Development by Strengthening the Social Clustering in Public Sector*”.

**Project promoter:** Lithuanian University of Educational Sciences.

**Project partners:** Fleksibel utdanning Norge, Birzai District Municipality Administration, Birzai District Municipality Public Health Office, Prienai District Municipality, Prienai Orphanage Home, Druskininkai Municipality, Druskininkai Education Centre, Utena District Municipality Administration, A. and M. Miškiniai Public Library, Utena, Vilnius College of Design, Limited liability company *Gintarinė Akademija*, Lithuanian College of Democracy.

For more information, please refer to: [www.socialcluster.lt](http://www.socialcluster.lt)



***Project developer and partners:***

Lietuvos Edukologijos universitetas - <http://leu.lt/lt/pradzia.html>

Fleksibel utdanning Norge - <http://fleksibelutdanning.no/>

Biržų rajono savivaldybė - <http://www.birzai.lt/>

Biržų rajono savivaldybės visuomenės sveikatos biuras -  
<http://www.birzuvsb.istaiga.lt/>

Prienų rajono savivaldybė - <http://www.prienai.lt/>

Prienų globos namai - <http://www.pgn.lt/>

Druskininkų savivaldybė - <http://www.druskininkai.lt/index.php>

Druskininkų Švietimo centras - <http://dscentras.lt/>

Utenos rajono savivaldybės administracija - <http://www.utenal.lt/>

Utenos A. ir M. Miškinių viešoji biblioteka - <http://www.uvb.lt/lt/>

Vilniaus Dizaino kolegija - <http://www.dizainokolegija.lt/lt/>

VšĮ Gintarinė akademija - <http://www.gintarineakademija.lt/>

Lietuvos demokratiškumo ugdymo kolegija - <http://www.lduk.lt/>